

Near East University
English Preparatory School
International Student Orientation Program

Welcome to NEU English Preparatory School!

 **About the Prep School**

- Prepare for your undergraduate studies in English.
- Levels: A1 → B2. The placement test decides your level and group.
- Improve speaking, listening, reading, and writing skills.
- Check the university booklet guide: Link [NEU STUDENT BOOKLET](#)
- Check prep school student handbook: [EPS-LEARNER-HANDBOOK-2025-2026.pdf](#)

Tips:

- Email: englishpreparatory.school@neu.edu.tr if you don't understand your level or progress.
- Practice English every day, even for 10–15 minutes, helps.
- Watch English videos or use language apps outside class.

 **Your Classes**

- Classes: Morning or afternoon, 5 days a week.
- Weekends are free! 🎉
- Each class is interactive – participate, ask questions, and practice!

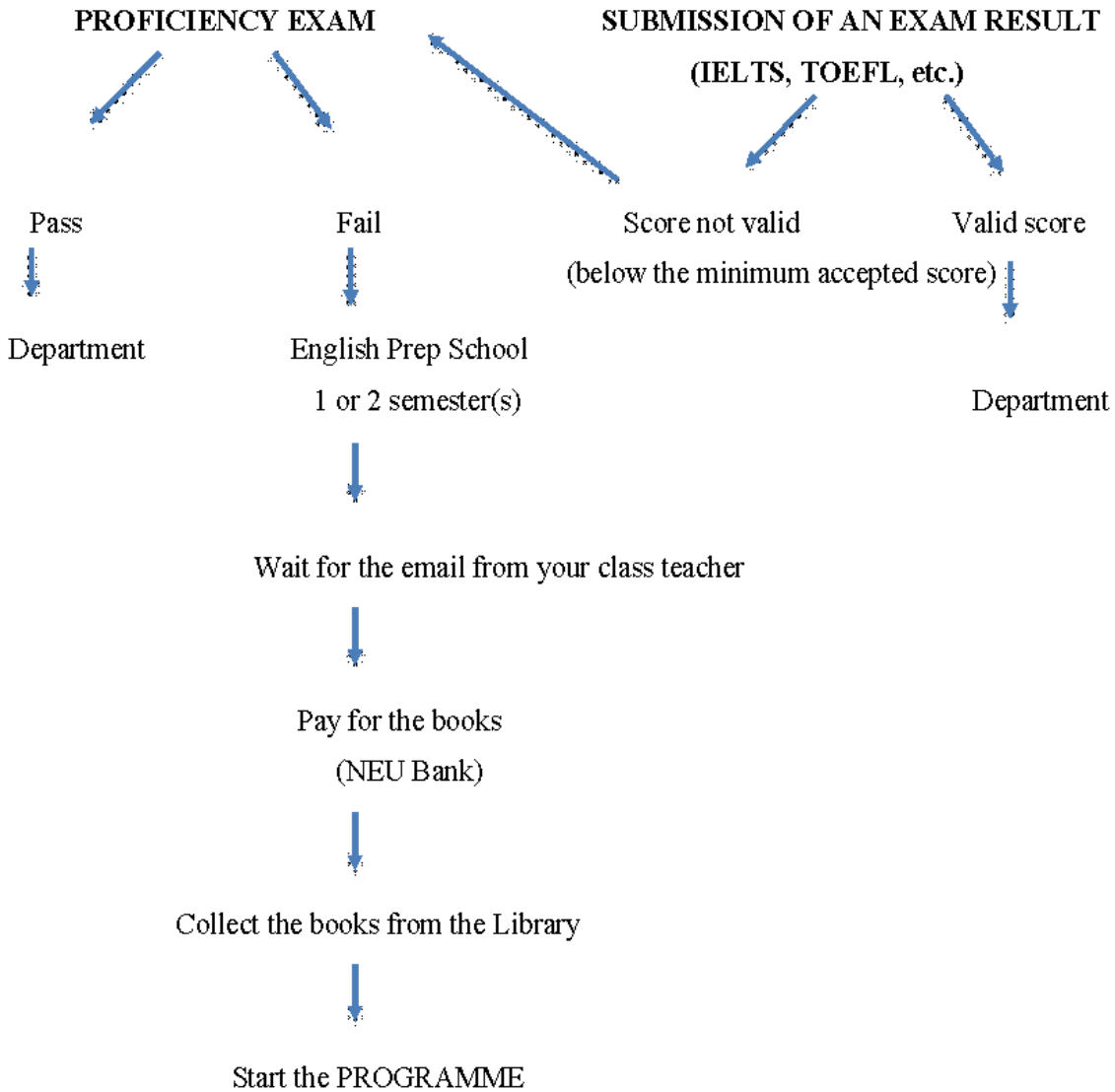
Tips:

- Sit near the front to hear and understand better.
- Take notes and review them daily.
- Don't be afraid to make mistakes – it's part of learning!
- Join group activities to practice speaking.

 **Placement Test**

- Shows your English level → helps you join the right class.
- Arrive on time and stay calm – it's just to help you!
- Good results may let you start your degree earlier.
- More detailed information is given below:

See the flowchart below to learn the steps you need to follow from registration to the completion of the PROGRAMME.



1) Students take the written English Proficiency and Placement Exam, and if they are successful, they can start the department.

-Students who are unable to pass the proficiency exam are placed in a class at the English Prep school based on their level.

- Students who do not wish to take the proficiency exam are placed in the lowest (beginner) level

-If the student has taken an internationally accepted exam, the original score sheet needs to be sent to englishpreparatory.school@neu.edu.tr for exemption.

- 1) An email is sent to those students who are required to study at the English Prep school by their class teacher. All the details are given in the email (timetable, books to be purchased....etc.)
- 2) The payment for the coursebooks is made to the NEU bank. The coursebooks (hardcopy) are collected from the main library.
- 3) Learners start the learning programme. They attend the classes and are assessed frequently throughout the semester.
- 4) At the end of the semester, students' total grade is calculated.
-If the total grade is above the minimum required grade, the student can start the department.
-If the total grade is below the minimum required grade, the student repeats the same level.

ENGLISH PROFICIENCY & PLACEMENT EXAM and RULES FOR EXEMPTION

- Students who register for an English-medium department at the Near East University are required to take the English Proficiency and Placement Exam.
- Students who are successful in the English Proficiency and Placement Exam can start in the department.
- Students who are unable to pass the proficiency exam are required to study at the English preparatory school. The students are placed in different levels based on their exam results.

Prospective students who meet the following requirements are exempt from the English proficiency exam for undergraduates and are eligible to start their PROGRAMME as freshmen students.

- Students who have graduated from a secondary school in an English-speaking country. These countries include the USA, the UK, Canada, New Zealand, and Australia.
- Students who reside in one of the following countries where their native language is English are exempt from the English Proficiency Exam:
Gambia, Ghana, Kenya, Liberia, Malawi, Nigeria, Sierra Leone, South Africa, Swaziland, Tanzania, Zambia, and Zimbabwe.

- Students who have completed the English PROGRAMME at another university within the last two years (the validity of which is evaluated by the administration).
- Transfer students
- Students who hold a valid certificate from one of the following exams (with the minimum required level mentioned):

EXAM	ACCEPTED RESULT
CAE (Cambridge)	160 and above
CPE (Cambridge)	180 and above
FCE (Cambridge)	160 and above
IELTS	5.5 (overall) and above
TOEFL IBT	66 and above
TOEFL CBT	180 and above
YDS	55 and above
YÖKDİL	55 and above
Pearson PTE	50 and above
SAT (Reading and Writing)	350 and above
IGCSE	A, B, C / 4-9
International Baccalaureate	Evaluated by the admin
UNPT	60 and above (ELL, ELT, and Translation departments) 55 and above (all other departments)
ACT	22 and above

Using UZEBİM (Your Online Hub)

- Access assignments, materials, and grades. Click- [UZEBİM](#).
- Check announcements every day.
- Submit homework and tasks on time.
- Track your progress and communicate with teachers.

Tips:

- Log in daily to avoid missing updates.
- Save your work and double-check submissions.
- Use the messaging system to ask teachers questions.
- Explore extra exercises or practice tests online.

Academic Rules

- Attend classes – missing lessons can affect your grades.

- No cheating or plagiarism! ⚠️
- Grades = exams + assignments + participation + final.
- Teachers grade independently; you get fair feedback.

Tips:

- Keep track of deadlines in a planner or phone calendar.
- Participate in class discussions – it counts toward your grade.
- Ask for clarification if you don't understand homework or instructions.
- Review graded work to learn from mistakes.



Quick Tips for Success

- Be on time for every class.
- Speak, ask, answer! 💡
- Check UZEBİM daily.
- Explore the campus and meet new people.
- Ask for help when you need it – don't wait!

Extra Tips:

- Make a weekly schedule to balance study and free time.
- Practice English as much as possible – even small conversations help.
- Connect with classmates to form study groups.
- Stay positive – learning takes time, mistakes are normal!

FREQUENTLY ASKED QUESTIONS (FAQs) ?

1. Is the English Preparatory PROGRAMME compulsory for all students?

Yes. It is compulsory for students registered in English-medium departments at NEU.

2. How long is the English Preparatory PROGRAMME?

One or Two semesters (4 levels: A1, A2, B1, B1+). The exit level for English Language Teaching, English Language & Literature, and Translation Studies is B2.

3. How can I be exempt from the English Preparatory PROGRAMME?

See the Exemption section above or click the link [Exemption page](#)

4. Where can I find UNPT (Undergraduate Proficiency Exam) sample questions?

Click the link [UNPT Sample Questions](#)

5. How can I see my English Placement Exam results?

Results are announced on the [Prep School Announcements Page](#) the day after the exam.

6. How am I assigned to a class?

Students are assigned based on their Placement/Proficiency Exam results.

7. What is the teaching system?

One or Two-semester program with 4 levels (A1 → B2). Students must score 90/180 in each module to move forward.

8. Is attendance compulsory?

Yes, at least 70% of total lesson hours. Medical reports cannot be used for absenteeism.

9. Can I make up a missed exam?

Yes, you can if you submit a valid medical report within 3 working days. Otherwise, you lose the make-up right.

10. How can I track my grades and attendance?

Your class teachers keep all records.

11. Where can I buy my course books?

Pay at Near East Bank and collect from the NEU Library Bookstore.

12. What if I have technical problems with online courses/exams?

Contact your class teacher immediately.

13. Are Psychological Support & Counseling services available?

Yes, contact your class teacher for help with personal, emotional, or psychological concerns.